

Friendly, Intelligent, Powerful

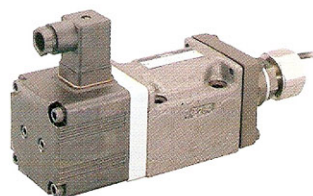
Servo Valves

High-speed Linear Servo Valves/Servo Amplifiers

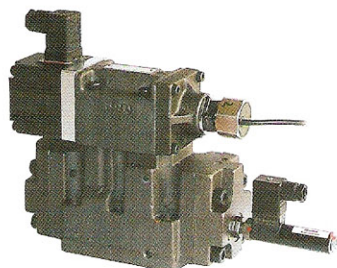
High-speed linear servo valves have outstanding features of high response and exceptional contamination resistance. These features are achieved by the compact and powerful linear motor which directly drives the spool and gives electric feedback of the spool position. These valves have garnered an excellent reputation since their launch by Yuken in 2001.

Specifications

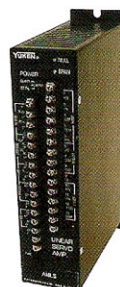
Model Numbers		Rated Flow ($\Delta P=7\text{MPa}$) L/min	Max. Operating Pressure MPa	Step Response 0 \leftrightarrow 100%V ms	Frequency Response ($\pm 25\%$ / -90deg.) Hz
Direct Type	LSVG-03	40, 10, 20, 40	35	2	450
		60	35	3	410
Two Stage Type	LSVHG-04	750	35	8	110
		900	35	8	105
	LSVHG-06	1300	31.5	10	100
		1500	31.5	8	100



Direct Type — LSVG-03



Two Stage Type — LSVHG-04



Linear Servo Amplifiers — AMLS

On-board Electronics Type Linear Servo Valves

On-board electronics type linear servo valves have been developed based on high-speed linear servo valves, but with a focus on downsizing the pilot valve. The integration of the exclusive amplifier and the linear servo valve create a high performance valve in a compact package which greatly improves user-friendliness.

High accurate, simple and convenient — Ideal on-board electronics type linear servo valves

Convenient

Fault diagnosis is easy to conduct with the alarm indication when the command signal and the spool position differ due to abnormality in the system.

Colour	Description of Alarm Indicator
Green	Indication of power supply (Normal operation)
Red	Deviation alarm for the pilot valve
Yellow	Deviation alarm for the main valve

High Accuracy

Closed loop control by the combination of the position sensors for the pilot valve and the main valve in the compact amplifiers ensures excellent linearity, hysteresis and stability on control.

Simple

Highly accurate hydraulic control can be obtained only by supplying 24 V DC power and inputting a command signal.

Specifications

Model Numbers	Rated Flow ($\Delta P=7\text{MPa}$) L/min	Max. Operating Pressure MPa	Step Response 0 \leftrightarrow 100%V ms	Frequency Response ($\pm 25\%$ / -90deg.) Hz
LSVHG-03EH-230	230	31.5	8	110
LSVHG-03EH-270	270	31.5	7	110
LSVHG-04EH-750	750	35	11	90
LSVHG-06EH-900/1300	900/1300	35/31.5	11/15	90/70

